



Community Planning & Local Area Working

Tuesday 4th October 2011



What to expect

1. BCC and Community Planning
2. What is Local Area Working?
3. Evidence and knowledge
 - i. NISRA
 - ii. NINIS
 - iii. CityStats
4. Effective partnership working



BCC and Community Planning



What is Local Area Working?

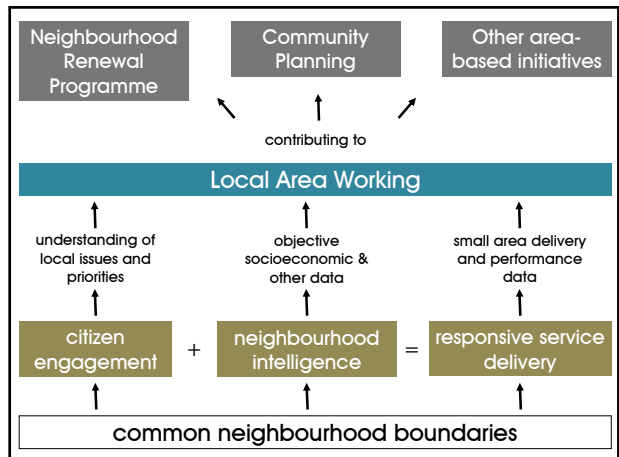
It's about:


- the **services** we already provide
- the **contributions** to area-based initiatives
- the **methods** we use to engage with citizens
- the local area **data**




How have we done this?

- i. devising a **City Place** geography for gathering local intelligence
- ii. developing a **Neighbourhood Intelligence System** to store local information
- iii. conducting a **My Neighbourhood** citizen engagement programme
- iv. coordinating the council's commitment to **Neighbourhood Renewal**





Evidence and knowledge



www.belfastcity.gov.uk

Northern Ireland Government Departments News Releases A to Z Index

NISRA

about NISRA news publications & links jobs

Home | News | Publications & Statistics

WELCOME

Friday 30 September 2011

Fiscal statistics
To view statistics on fiscal issues please enter full postcode or street.

Publications and statistics
All Publications
Agriculture Fishing and Forestry
Commerce Energy and Industry
Crime and Justice
Economy
Education and Training
Government
Health and Care
Labour Market
National and Bank
Environment
Population and Migration
Social and Welfare
Transport Travel and Tourism

Key Statistics
2010 Population: 1,791,212
2010 Life Expectancy: 78.1
Unemployment Rate May - July 2011: 2.4%
2009 Gross Value Added per head (£): 115,700

Search NISRA
Enter postcode or street

NISRA information areas
Carrington
Central Survey Unit
General Register Office
Social Registration
Equality
SI Local Authority Study
Carrington

Latest News
Register: General Quarterly Report, Quarter 2, 2011
Read Story
Population Estimates for those aged 65 and over (2002-2010)

Official statistics websites
Agriculture
Culture Arts & Leisure
Education
Employment & Learning
Enterprise, Trade & Investment
Health
Environment
Financial Development

NINIS Northern Ireland Neighbourhood Information Service (NINIS)

NINIS provides free access to statistical and locational information relating to small areas across Northern Ireland. Information is available across a range of Themes including Population, Social and Welfare, Agriculture & Education. Users will be able to obtain an area profile by entering a postcode or by selecting an area to view.

Statistics for your Neighbourhood
To view statistics on your local area please enter full postcode or street.
BT7 1H4 Search

Subscribe to NINIS

Latest News
the Department for Education and the Department for Environment.

- [Bankruptcy Cases Disposed 2010](#)
- [Mortgage Cases Received and Disposed 2010](#)
- [Planning Applications and Decisions of Appeal 2010](#)
- [Dust Teacher Pensions 2011](#)

Follow NINIS on Twitter

Join NISRA on Facebook

For enquiries please telephone 030 90 348111 or email enquiries@nirsa.gov.uk

NINIS Northern Ireland Neighbourhood Information Service (NINIS)

NINIS Home | NINIS | Area Profile | Interactive Maps | Data | Maps News | FAQs | Terms | About Us | Contact Us | Links

Area Profile Postcode: BT7 1NH

Postcode or street: Search

Download in PDF Format

Printed friendly version

Area Profile: Northern Ireland | Assembly Area (PSA Boundary) | Local Government District | Electoral Ward | Super Output Area | Output Area

Ward Information for Botanic ward 95GG12

Profile last updated June 2010.

This page provides information on residents in Botanic ward. Click on theme titles below to obtain an area profile for that subject. The datasets used are shown below in each section and are actively linked to the Data Catalogue spreadsheets. Click on the blue tabs at the top to see results for other geographical levels.

Geography

- Demography
- Crime and Justice
- Education and Training
- Employment, Economic Activity and Social Welfare
- Deprivation
- Health and Care
- Housing, Environment and Transport

Geography

Click on the map to the right to see a more detailed map of Botanic ward.

Botanic ward lies in the following administrative areas:

- Belfast Local Government District;
- Belfast South Parliamentary Constituency (1992 Boundaries - See Assembly Area tab for further information);
- Belfast South Assembly Area 2011 Westminster Parliamentary Constituency 2008;
- Belfast Health and Social Care Trust; and
- Belfast Education and Library Board.

Please note Assembly Area comparisons are based on the 1992 Parliamentary Constituency Boundaries and not the Assembly Area 2011 Westminster 2008 Boundaries. Please see Westminster Parliamentary Constituency Guidance Document for more information.

Botanic ward is made up of the following Super Output Areas (SOAs). For a profile of each click on the link(s) below:

Belfast City Stats

Home | About | FAQs | Contact | Toolbar | Sign In

View and search home

Groups

- **Neighbourhoods**
 - East Belfast
 - North Belfast
 - South Belfast
 - West Belfast
- **City Plans**
- **Neighbourhood Renewal Areas**
- **Electoral Districts**
- **Corporate Themes & Priorities**
- **Services**
- **Council Departments**
- **Funding & Grants**

Latest News

Labour Vacancy Data for 2010 (2011 December 2011)
CityStats Training now available (27 August 2011)

Latest Resources

East Priority Action Plan (2011 December 2011)
CityStats User Manual (28 December 2011)
Central Postcode Directory (2011 December 2011)

Latest Data

Number and percentage of people in the City of Belfast (2011 December 2011)
Public Health and Welfare Survey Results (14 December 2011)
Housing Applications Due to Completion and Renewal Contracts (08 December 2011)

Belfast City Stats

Home | About | FAQs | Contact | Toolbar | Sign In

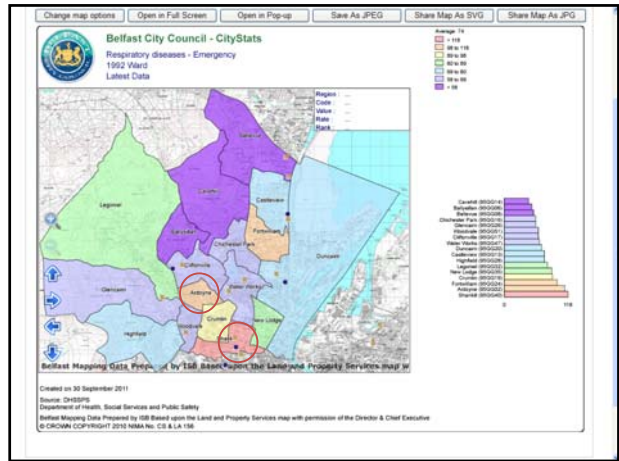
View and search home

Filter Time period: 20090101

Quick Export: to PDF | to XLS | to RTF | to CSV | Show or hide me/mas/average & count summary information.

Type: 1992 Ward

Code	Region	Circulatory Disease - Elective	Circulatory Disease - Emergency	Circulatory Disease - Other	Respiratory Disease - Elective	Respiratory Disease - Emergency
950602	Ardsley	42	37	9	23	112
950606	Balbrin	80	56	17	21	35
950608	Belfast	41	40	12	18	54
950613	Castlereagh	68	39	8	17	24
950614	Craig	38	36	7	16	43
950616	Chichester Park	29	32	3	27	38
950617	Ottaville	40	34	6	20	63
950619	Cumlin	38	65	12	22	89
950620	Duncum	43	61	7	30	69
950624	Portlough	31	83	7	18	98
950626	Glencam	44	36	6	15	38
950628	Highfield	46	41	10	26	74
950632	Legoland	45	75	9	34	88
950635	New Lodge	40	36	8	22	88



Belfast CityStats

Home About FAQs Contact Toolbox Sign In

You are here: Resources

Groups

- Search
- City Plans
- Neighbourhood Renewal Areas
- Health District Areas
- Corporate Themes & Priorities
- Finance
- Council Departments
- Funding & Grants

Health

Belfast CityStats

Latest News

Current Query: (click to remove filter from your query)

Refine your search: (click a link below to filter your query)

Category: Health, Population

Resource Type: File, Web, List

Item Type: External Web, List, PDF

IPSV Tags: Health, well-being and care

Resources Found for the above query (3)

Fuel Poverty in Ireland (29 September 2011)

Smoking Cessation Statistics in Northern Ireland (12 May 2011)

Healthier City Framework and 2010-2011 Healthier City Plan (16 February 2011)

Healthier and Smarter Services Strategy (19 December 2011)

Annual Performance Data in Governance and Strategic Objectives (26 December 2011)

Deaths by Cause (not including accidents) (22 August 2011)

Northern Ireland Statistics & Research Agency

Department of Health, Social Services and Public Safety

Skáinite, Sárthráid Stáitaha agus Sárthráid Iona Poblá

Department of Health, Social Services and Public Safety

Statistics on Smoking Cessation Services in Northern Ireland: 2009/2010

This information release, produced by the Department of Health, Social Services and Public Safety's Information and Analysis Directorate, provides information on smoking cessation services. Data are included on the monitoring of smoking cessation services in Northern Ireland during the period 1st April 2009 to 31st March 2010.

This report also provides an analysis of data collected in 2009/10 in respect of clients who set a quit date during 2008/09 (52 week follow-up). Information within this report has been produced from a web based recording system. Data is downloaded at a particular point in time. Figures here are correct as of 26th July 2010.

Summary

Within Northern Ireland during 2009/10:

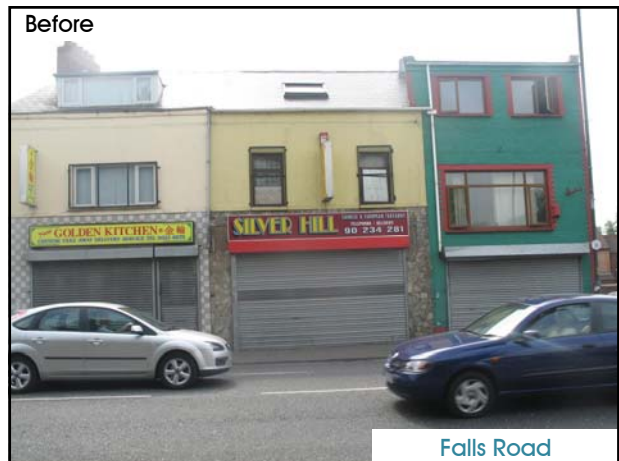
- 23,383 people set a quit date through the smoking cessation services. This is an increase of 2,111 (10%) on the same period last year.
- Of those setting a quit date, 2% were under 18 years of age, 35% were aged 18-34, 23% were aged 35-44, 25% were aged 45-59, and 13% were aged 60 and over.
- Nicotine Replacement Therapy (NRT) was the most popular form of therapy, with 60% of those who set a quit date opting

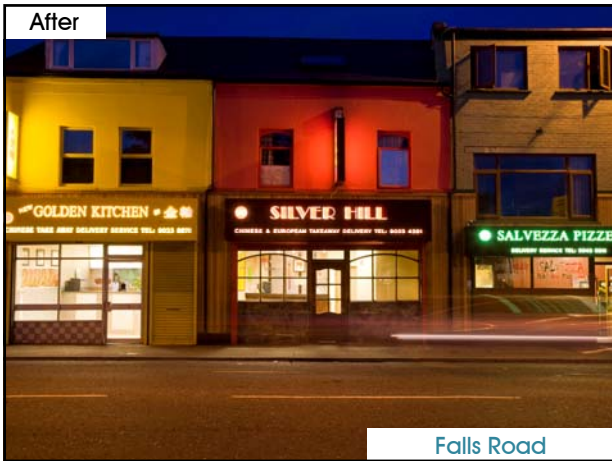
Contents	Page
1. Introduction	2
2. Background	2
3. Setting a quit date	3
4. Follow-up at 4 weeks	4
5. Quarterly comparison	5

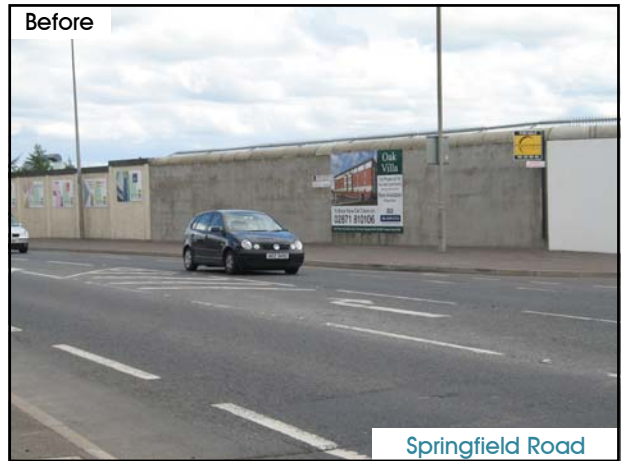
Belfast

Effective partnership working

www.belfastcity.gov.uk








Belfast

Other examples:

- Holyland Interagency Group
- Community Interface Working Group
- Evaluating Public Events strategy
- South West Parks plan
- Woodbourne Physical Improvement scheme
- Tildarg Street Community Garden
- St James' Community Garden
- Healthy Choices pilot
- Renewing the Routes prioritisation model



www.belfastcity.gov.uk



What next.....

